

Pipe Layer

RL 64
Litronic

Preliminary Version

Engine output: 270 kW / 367 HP
Max. lift capacity: 91.700 tons
Operating weight: 58.000 kg



LIEBHERR

Basic machine

Engine

Liebherr diesel engine	D 946 L A6 Emission regulations according to 97/68/EC, 2004/26/EC Stage IIIA and EPA/CARB Tier 3
Rating (ISO 9249)	270 kW / 367 HP
Rating (SAE J1349)	270 kW / 362 HP
Rated speed	1,800 1/min
Displacement	12 l / 733 in ³
Design	6 cylinder in-line-engine (wet-sleeve) water-cooled, turbocharged, intercooled
Injection system	Direct fuel injection, pump-line-nozzle system, electronic control
Lubrication	Force-feed lubrication, engine lubrication in an inclined position up to 45°
Operating voltage	24 V
Alternator	80 A
Starter	7.8 kW / 11 HP
Batteries	2 x 225 Ah / 12 V
Air cleaner	Dry-type air cleaner with safety element, aspirated pre-cleaner, service gauge in cab
Cooling system	Combi radiator, comprising a radiator for water and charge air, hydrostatic fan drive

Travel drive, control

Transmission system	Infinitely variable hydrostatic travel drive, independent drive for each frame
Travel speed*	Continuously variable
Speed range 1 (reverse)	0-4.0 km/h / 2.5 mph (4.8 km/h / 2.9 mph)
Speed range 2 (reverse)	0-6.5 km/h / 4.0 mph (7.8 km/h / 4.8 mph)
Speed range 3 (reverse)	0-11.0 km/h / 0-6.8 mph
	* Pre-adjusted, all speed ranges can be customised on the travel joystick (memory function)
Drawbar pull at 1.5 km/h / 0.9 mph	520 KN
Electronic control	Electronic engine speed sensing control (load sensing feature) automatically adjusts travel speed and drawbar pull to match changing load conditions
Steering	Hydrostatic
Service brake	Wear-free, hydrostatic (dynamic braking)
Automatic park brake	Wear-free, wet multiple-disc brakes, automatically applied with neutral joystick position
Cooling system	Separate hydraulic oil cooler, hydrostatically driven and thermostatically controlled
Filter system	Micro cartridge filters in cooling circuit
Final drive	Heavy-duty combination spur gear with planetary final drives, double sealed with electronic seal-integrity indicator
Control	Single-lever for all travel and steering motions, as well as for counterrotation

Noise emissions

Operator sound exposure	Emission at the operator's position L _{PA} = 79 dB(A) ISO 6396:1992
Exterior sound pressure	L _{WA} = 114 dB(A) 200/14/EG

Refill capacities in Imp. gallons

Fuel tank	650 l
Cooling system	74 l
Engine oil with oil filters	43 l
Splitter box	5.5 l
Hydraulic tank	240 l
Final drive, each	26 l

Operator's cab

Cab	Resiliently mounted cab with positive pressure ventilation, can be tilted with hand pump 40° to the rear. With ROPS Rollover Protective Structure (ISO 3471)
Operator's seat	Comfort Seat, adjustable to operator's weight
Monitoring	Combined analogue / LC display, automatic monitoring, display if deviating operating conditions

Undercarriage

Design	Rigid Undercarriage
Mount	Elastic components at a separate pivot
Chains	Lubricated single-bar grouser shoes track chain tension via grease tensioner and hydraulic cylinders
Links, each side	48
Track rollers/carrier rollers	9/2 each side
Sprocket segments	5 each side
Track shoes	914mm / 762mm

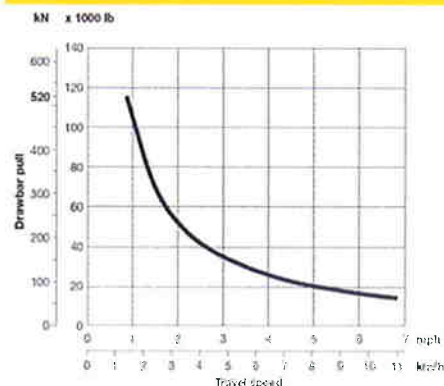
Hydraulic system

System type	Load Sensing proportional pump flow control
Pump type	Swash plate variable displacement piston pump
Pump flow max.	283 l/min
Pressure limitation	280 bar
Control valve	3 segments, expandable to 4
Filter system	Return filter with magnetic rod in the hydraulic tank
Control	Single joystick lever for hoist winch, adjustable boom cylinder, free fall device in case of danger. Further single joystick lever for counterweight

Hydraulic winch

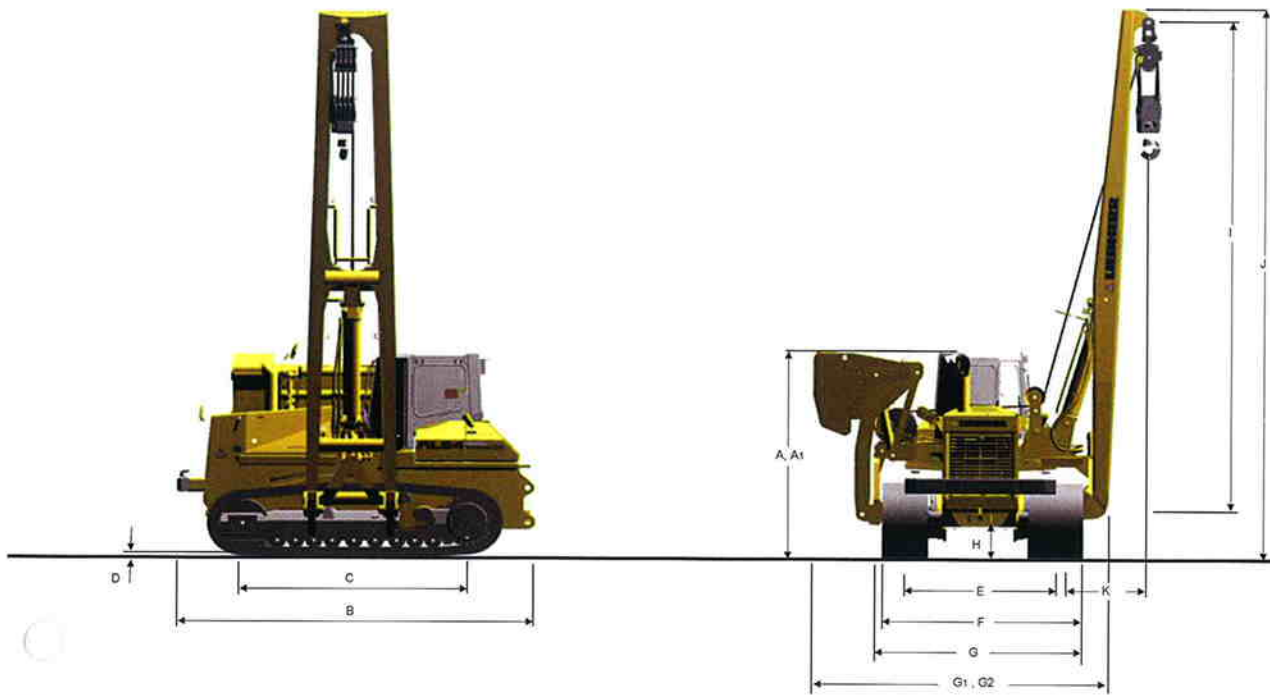
Hoist winch	Variable flow hydraulic pump
Safety brake	Spring-loaded disk brake holds the load safely in any position
Drum diameter	254 mm
Drum length	279 mm
Flange diameter	610 mm
Cable diameter	20 mm
Cable length	100 mm
Hook block	8 sheaves
Hook speed (up,down)	0- 16.0 m/min, 0-16.0 m/min
Safety device	Free fall control

Drawbar pull



Usable drawbar pull will depend on traction and weight of pipelayer

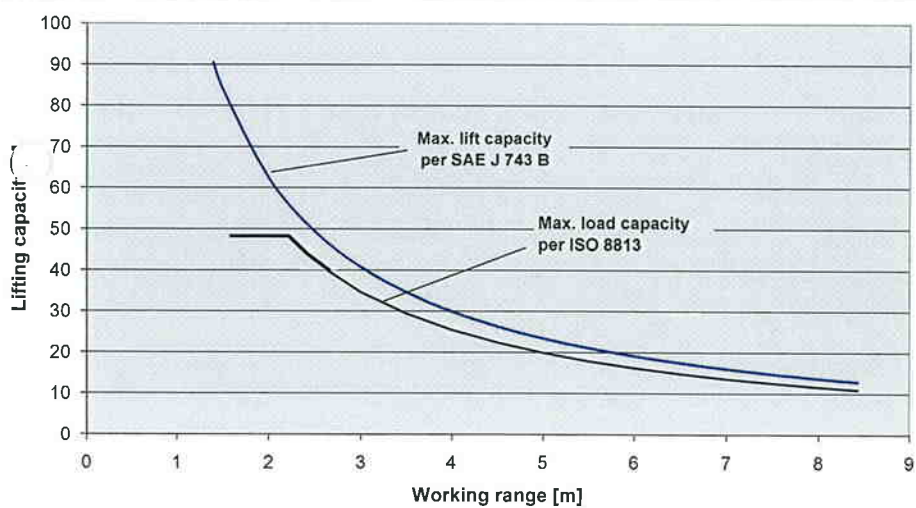
Dimensions



Dimensions

A	Height over cab	3.630 mm
A _t	Height over counterweight	3.540 mm
B	Overall length	5.760 mm
C	Distance idler/sprocket center	3.605 mm
D	Height of grousers	84 mm
E	Track gauge	2.510 mm
F	Total width over undercarriage	3.348 mm
G	Width (boom and counterweight remov	3.495 mm
G ₁	Width (counterweight retracted)	4.835 mm

G ₂	Width (counterweight extended)	6.525 mm
H	Ground clearance	630 mm
I	Boom length	8.500 mm
J	Total height	9.515 mm
K	Distance (outer edge of chain link to hook)	1.380 mm
	Tractor shipping weight	39.000 kg
	Counterweight	15.035 kg
	Weight of boom	3.265 kg



Equipment

Basic machine

	Standard	Option
Tow switch	x	
Towing hitch rear	x	
Towing lug front	x	
Battery compartment, lockable	x	
Filling with oil SAE 30		x
Filling with oil SAE 10		x
Refuelling pump, electric		x
Belly pans, heavy-duty	x	
Cold start device, glow plug	x	
Radiator, wide-meshed	x	
Radiator guard, heavy-duty	x	
Radiator guard, hinged	x	
Liebherr diesel engine	x	
Fan, hydraulically driven	x	
Fan guard	x	
Engine cover, perforated	x	
Engine doors, perforated	x	
Engine doors, hinged, lockable	x	
Lugs for crane lifting		x
Special paint		x
Fuel water separator	x	
Fuel water separator with electric heater		x
Air filter dry-type, dual step	x	
Pre-cleaner with automatic dust ejector	x	
Toolkit	x	

Travel drive

Parking brake, automatic	x	
Function control, automatic	x	
Control, single joystick	x	
Load limit control, electronic	x	
Electronic control	x	
Travel control 3-speed	x	
Hydrostatic travel drive	x	
Inching brake pedal	x	
Oil cooler	x	
Final drives planetary gear	x	
Safety lever	x	
Emergency stop	x	

Undercarriage

Track frame, closed	x	
Spocket segments, bolted	x	
Master link, two-piece	x	
Track guide centre part		x
Tracks oil lubricated	x	
Track guard		x
Undercarriage, rigid	x	
Track frames	x	
Pivot shaft, separate	x	

Electrical system

Starter motor	x	
Working lights, front, 4 units	x	
Working lights, rear, 2 units	x	
Working lights, side 2 units	x	
Batteries, cold start, 2 units	x	
Battery main switch, mechanical	x	
On-board system 24 V	x	
Alternator 80 A	x	
Back-up alarm		x
Beacon		x
Horn	x	
Start lock, electronic		x
Additional lights, rear		x

Operator's cab

	Standard	Option
Storage compartment	x	
Armrest 3D adjustable	x	
Ash tray	x	
Pressurized air filter	x	
Operator's seat, 6-way adjustable	x	
Operator's seat, air-suspended		x
Fire extinguisher		x
Dome light	x	
Coat hook	x	
Air conditioning		x
FM radio		x
Radio installation kit		x
ROPS	x	
Rear mirror, inside	x	
Safety glass, tinted	x	
Windshield, washer system with intermittent function	x	
Windshield wipers front, rear	x	
Sliding windows, left	x	
Sliding windows, right		x
Dormer window	x	
Extension, seat back		x
Sun visor	x	
Socket 12 V	x	
Warm water heating	x	

Control and warning lights

Control travel speed range (digital)	x	
Control engine coolant temperature (analogue)	x	
Control fuel level (analogue)	x	
Hour meter (analogue)	x	
Warning light battery charging	x	
Warning light diesel engine	x	
Warning light electronic travel control system	x	
Warning light travel drive seal, each side	x	
Warning light parking brake	x	
Warning hydraulic oil temperature		x
Warning fuel water separator	x	
Warning light pump replenishing pressure	x	
Warning light oil return filter	x	
Warning light air filter	x	
Warning light heater Diesel engine	x	
Main warning light	x	

Hydraulic system

Hydraulic control counter weight	x	
Hydraulic control winch and boom	x	
Variable flow pump, load sensing	x	
Oil filter with strainer in hydraulic tank	x	
Free fall device	x	
Control valve for 1 circuit		x
Hydraulic servo control	x	
Hydraulic tank oil level control		x

Attachments

Boom 8.500 mm	x	
Counterweight	x	
Hook with rope	x	
Drawbar rear, rigid		x
Counterweight, rear		x
Winch rear		x