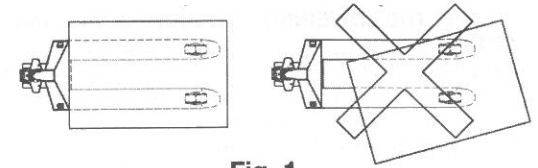
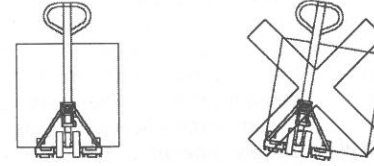


**D** Sachwidrige Verwendung

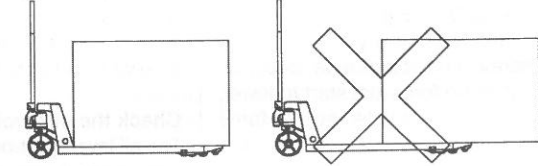
**GB** Incorrect operation



**Fig. 1**



**Fig. 2**



**371911/0014**  
Gabelhubwagen 2,5t Gabellänge 800mm



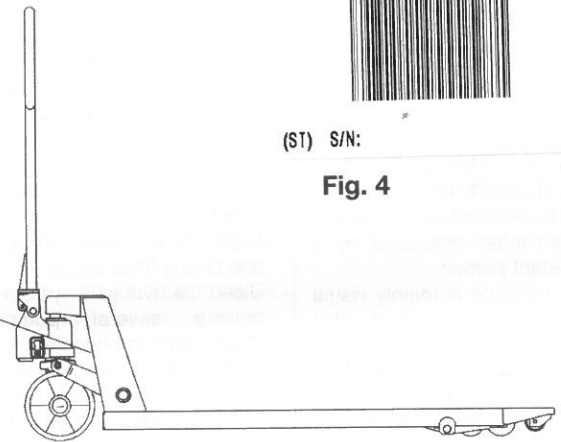
(ST) S/N: \_\_\_\_\_

**Fig. 4**

**D** Typenschild

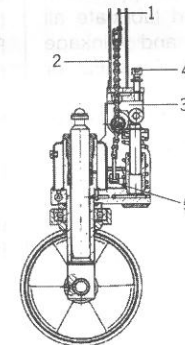
**GB** Name plate

Seitjahr Mod. Year Production	2000	Nr. No. No.	122077
Traglast Capacity Capacity	2,5 ton	Gesamt Weight Total	79 kg
Modell Model Model	180 Profi 28 T	Gabeln Forks Forks	1180 mm
Talo Industrial Products GmbH D-42549 Velbert, Germany			



**D** Montage der Handeichsel

**GB** Assembly of the handle



**Fig. 5**

**Beschreibung**

- 1 Handeichsel
- 2 Zugverbinder
- 3 Betätigungsblock
- 4 Zylinderschraube
- 5 Betätigungshebel

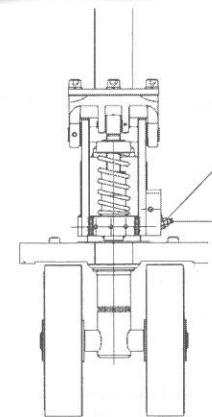
**Description**

- 1 Handle
- 2 Link connection
- 3 Actuating block
- 4 Screw
- 5 Actuating lever

**D** Einstellung der Absenkbewegung

**GB** Adjusting the lowering function

**Fig. 6**



**Beschreibung**

- 1 Sechskantmutter
- 2 Gewindesttift

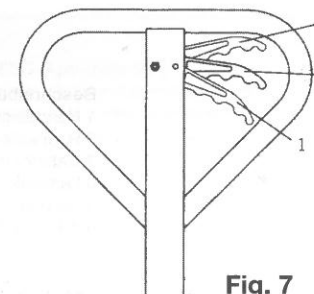
**Description**

- 1 Hex. nut
- 2 Setscrew

**D** Position Schaltgriff

**GB** Control lever position

**Fig. 7**



**Beschreibung**

- 1 Heben
- 2 Senken
- 3 Neutral

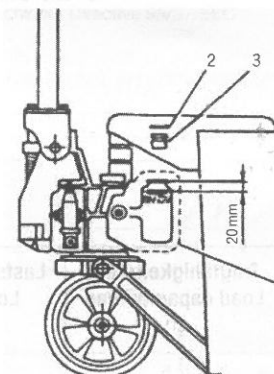
**Description**

- 1 Lifting
- 2 Lowering
- 3 Neutral

**D** Überprüfung Ölstand

**GB** Checking oil level

**Fig. 8**



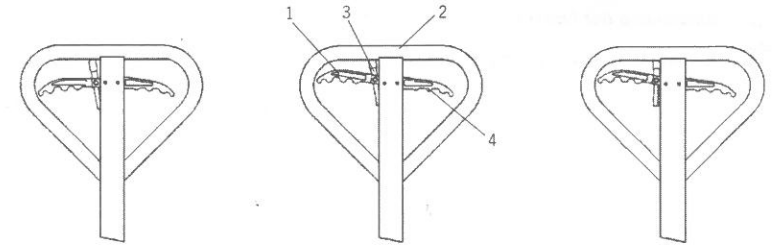
**Beschreibung**

- 1 Abdeckung Tank
- 2 O-Ring
- 3 Gummideckel

**Description**

- 1 Cover sheet tank
- 2 O-seal
- 3 Rubber cap

**D** Bremse  
**GB** Brake



**Fig. 9**

**Neutral (Fahren)  
Neutral**

**Bremsen  
Apply brake**

**Bremse lösen  
Release brake**

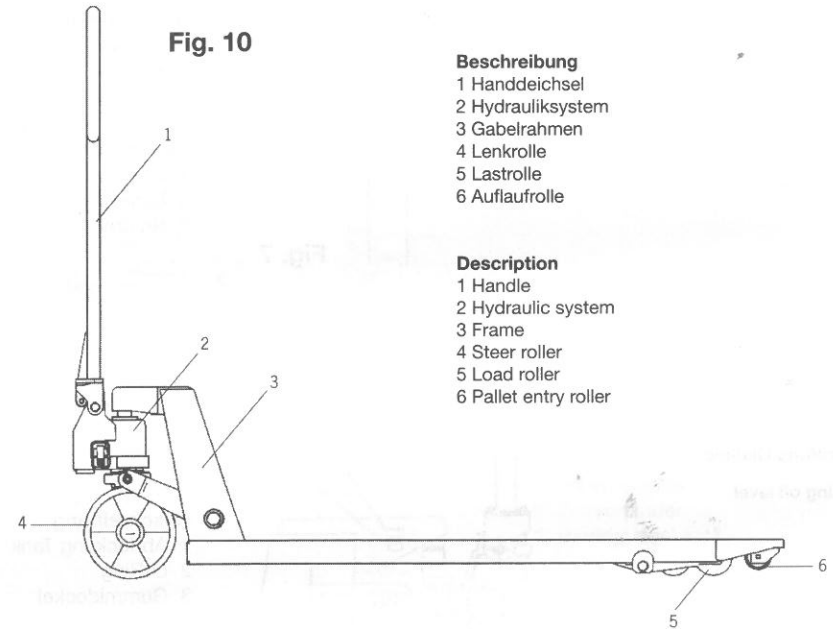
**Beschreibung**

- 1 Bremsgriff
- 2 Handeichsel
- 3 Hebel m. Verzahnung
- 4 Schaltgriff

**Description**

- 1 Brake lever
- 2 Handle
- 3 Toothed lever
- 4 Control lever

**Fig. 10**



**Beschreibung**

- 1 Handeichsel
- 2 Hydrauliksystem
- 3 Gabelrahmen
- 4 Lenkrolle
- 5 Lastrolle
- 6 Auflaufrolle

**Description**

- 1 Handle
- 2 Hydraulic system
- 3 Frame
- 4 Steer roller
- 5 Load roller
- 6 Pallet entry roller

Modell Model	Tragfähigkeit/Last Load capacity/load (t)	Lastschwerpunkt Load centre (mm)	Eigengewicht Tare weight (kg)	Hub MFH (mm)
9000 443351, 9000 443355	2,5	600	76	115
9000 443352	2,5	400	69	115

**Tabelle 1**