

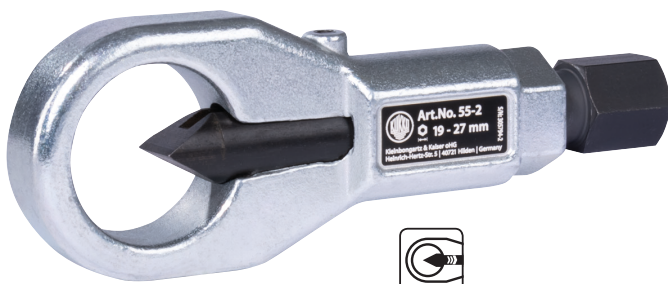


Muttersprenger

Baureihe 55



Anleitung zum mechanischen Muttersprenger 55-0 bis 55-4 zum Sprengen von Muttern in der Güteklasse 5, 6 und 8








Wofür wird ein Muttersprenger benötigt?

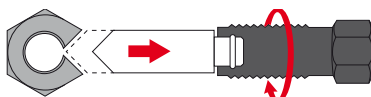
Um festsitzende, beschädigte oder überdrehte Muttern zu sprengen ohne den Gewindebolzen zu beschädigen.



Um die Darstellung zu verbessern wurde auf die Unfallschutzpläne verzichtet. Dies entspricht nicht den KUKKO-Sicherheitsvorschriften - siehe unten!

Art. No.	 mm	 M	 mm	 mm	 mm	Ersatzteil Meißel
55-0	4-10	M2-M6	8	58	14	55-0-M
55-1	10-18	M6-M12	12	80	17	55-1-M
55-2	19-27	M12-M18	14	105	17	55-2-M
55-3	27-36	M18-M24	16	125	19	55-3-M
55-4	32-50	M22-M30	26	203	32	55-4-M

TECHNOLOGIE



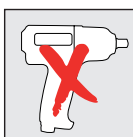
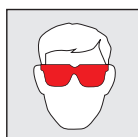
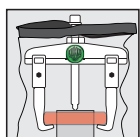
Einzigartiges, leichtes Zurückdrehen des Muttersprenger-Meißels aus verformten oder gesprengten Muttern. Der Meißel bleibt nicht in der Mutter hängen.

ERSATZMEISSEL



Die Sprengmeißel der Muttersprenger sind Verschleißteile, sie unterliegen nicht der Garantie. Stumpfe, schartige oder ausgebrochene Meißel sind sofort auszutauschen. Halten Sie die Spindel des Muttersprengers immer sauber und gut gefettet.

SICHERHEITSHINWEISE



Alle Sicherheits- und Gebrauchshinweise zum Download

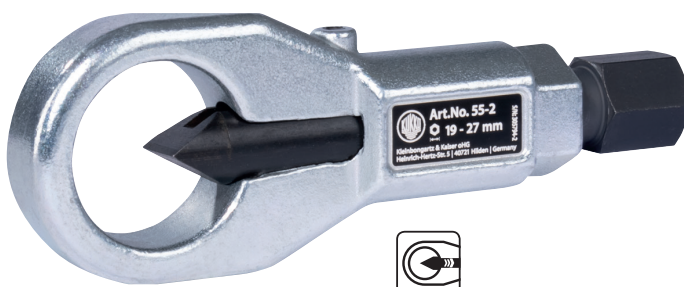




Nut splitters series 55



Instructions for mechanical nut splitter 55-0 to 55-4 for splitting grade 5, 6 and 8 nuts.








What is a nut splitter needed for?

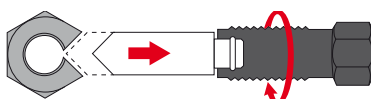
For splitting particularly large tight or over-twisted nuts without damaging the bolt thread.



Images for advertising purpose only – pullers and other tools are not shown in use! This does not comply with the KUKKO precautionary notes and helpful hints - see below!

Art. No.	 mm	 M	 mm	 mm	 mm	sparepart chisel
55-0	4-10	M2-M6	8	58	14	55-0-M
55-1	10-18	M6-M12	12	80	17	55-1-M
55-2	19-27	M12-M18	14	105	17	55-2-M
55-3	27-36	M18-M24	16	125	19	55-3-M
55-4	32-50	M22-M30	26	203	32	55-4-M

TECHNOLOGY



Unique, simple pullback of the nut splitter chisel to remove it from deformed or split nuts. This means that the chisel does not get caught in the nut.

SPARE PART CHISEL

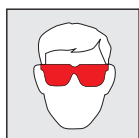
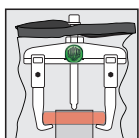


The splitting chisels of the nut splitters are wearing parts, they are not covered by the guarantee.

Blunt, pitted or broken chisels must be replaced immediately.

Keep the thread of the splitting chisels clean and well oiled.

PRECAUTIONARY NOTES



 You can download all precautionary notes and helpful hints here

